

Center to Reduce Cancer Health Disparities

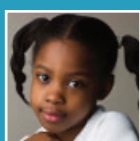
Overview

The National Cancer Institute (NCI) established the Center to Reduce Cancer Health Disparities (CRCHD) in 2001 to help reduce the unequal burden of cancer in our society.

Mission

To reduce cancer health disparities, CRCHD:

- Strengthens the NCI cancer research portfolio in basic, clinical, translational and population-based research to address cancer health disparities through collaborations with NCI Divisions, Offices and Centers.
- Advises on strategic priorities, program direction and scientific policy to strengthen cancer disparities research, diversity training, women's health, and sexual and gender minority opportunities.
- Leads NCI's efforts in workforce diversity through the training of students and investigators from diverse backgrounds.



Cancer health disparities are adverse differences between certain groups in cancer measures, such as incidence, prevalence, morbidity, mortality, survivorship and quality of life after cancer treatment, burden of cancer or related health conditions, screening rates and stage at diagnosis.

Although disparities are often considered in the context of race/ethnicity, other population groups may experience cancer disparities. These include groups defined by disability, gender and sexual identity, geographic location, income, education, and other characteristics.

The field of cancer health disparities is complex and affected by a multitude of health, biological, environmental and social factors. To advance understanding of the multifactorial causes of cancer disparities, including biological and non-biological bases of cancer incidence and progression, networking programs facilitate new and ongoing linkages between research, training and outreach.

Learn More

To learn more about CRCHD, please visit: crchd.cancer.gov

Programs

Continuing Umbrella of Research Experiences (CURE)

CURE is a national research training and career development initiative that focuses on building and sustaining a pipeline of diverse cancer investigators. CURE provides training opportunities for underrepresented students and trainees across the academic continuum in order to diversify the workforce in cancer and cancer health disparities research.

Intramural Continuing Umbrella of Research Experiences (iCURE)

The iCURE program supports mentored research experiences for qualified students and scientists in the multidisciplinary research environment of the NCI campuses in Bethesda, Rockville, and Frederick, MD. iCURE is an extension of the highly successful CURE program.

Partnerships to Advance Cancer Health Equity (PACHE)

PACHE enables institutions serving racial/ethnic and/or underserved communities with cancer health disparities and NCI Cancer Centers to:

- Build research and training capacity at institutions serving underrepresented populations
- Create stable, long-term collaborations between institutions and cancer centers in research, training, career development, and outreach
- Improve effectiveness of research, education, and outreach for underserved populations
- Export successful approaches for addressing disparities

National Outreach Network (NON)

NON seeks to strengthen NCI's ability to develop and disseminate culturally appropriate, evidence-based cancer information that is tailored to the specific needs and expectations of underserved communities, working through NON community health educators located at NCI-designated Cancer Centers. NON's goals are to:

- Enhance NCI's cancer health disparities research efforts through local and regional culturally tailored education/outreach within underserved communities
- Enhance NCI's ability to disseminate culturally appropriate, evidence-based cancer information to underserved communities
- Adapt and test culturally tailored education/outreach activities that address local and regional cancer health disparities issues

Geographical Management of Cancer Health Disparities Program (GMAP)

GMAP is a regional strategy to build critical "hubs" for the support and efficient management of cancer health disparities research, training and outreach. GMAP's goals are to contribute to the science of cancer health disparities and promote the development of the next generation of competitive, underrepresented cancer and cancer health disparities investigators.

The regional GMAP hubs bring together investigators and researchers, particularly those working in cancer health disparities and underrepresented investigators, underrepresented trainees and students, community health educators, and community members to work together to:

- Share information, resources and tools
- Enhance access to underrepresented investigators and trainees and foster career development linkages
- Strengthen region-based community education and outreach efforts that contribute to achieving GMAP goals

Special Initiatives

Training Navigation

Training navigation facilitates underrepresented scholars' successful entry and advancement through the CURE training pipeline to independent research careers.