

NATIONAL OUTREACH NETWORK (NON)

NON Overview

The National Cancer Institute's (NCI) National Outreach Network is a multidisciplinary program that bridges NCI-supported outreach and community education efforts with cancer health disparities research and training programs across the country. NON conducts outreach and research activities through trained community health educators located at partnering NCI-designated cancer center sites, the communities in their catchment area, and the regional GMaP initiative.

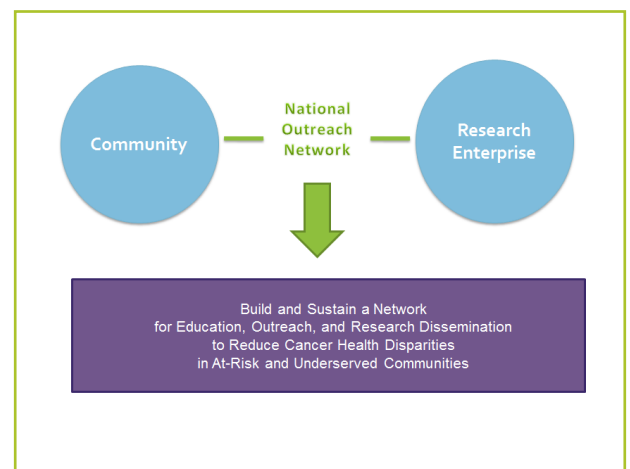
Goals

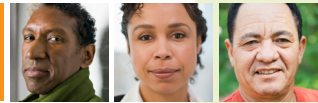
- Enhance NCI's cancer disparities research efforts through local and regional culturally tailored education/outreach within underserved communities.
- Enhance NCI's ability to disseminate culturally appropriate, evidence-based cancer information to underserved communities.
- Adapt and test culturally tailored education/outreach activities that address local and regional cancer health disparity issues.
- Promote a diverse cancer health disparities workforce.

Objectives

- Integrate NON CHEs within the research and outreach efforts of the cancer centers and the communities in their catchment areas.
- Plan, conduct, and assess CHE-facilitated community education and outreach, aligned with NCI and cancer center research and outreach priorities, within underserved communities.
- Strengthen partnerships/collaborations with key NCI sponsored academic, research, community, and regional partners to enhance NCI's ability to effectively reach underserved communities with tailored cancer information and foster community engagement in research.

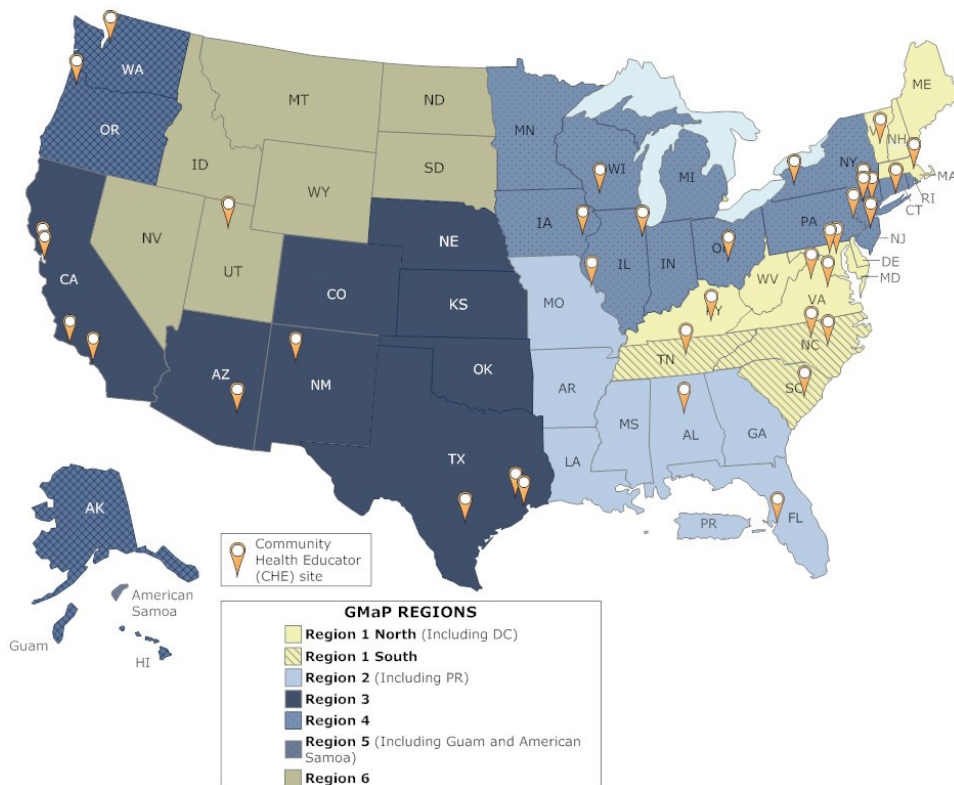
For more information, contact Ms. Sandra San Miguel at sandra.sanmiguel@nih.gov.





NON COMMUNITY HEALTH EDUCATORS (CHEs)

Community Health Educators are experienced in communications, comprehensive cancer control, training, program planning, and evaluation, and are embedded into NON's 37 participating NCI-designated Cancer Centers around the U.S. They serve as vital links between NCI, grantee institutions, and communities to identify needs and disseminate culturally tailored cancer information.



Scan this QR code with your mobile device to access NON information online.

NON CHE Outreach Activities

- Identify gaps and barriers to the integration of community education/outreach within the cancer center and propose strategies to resolve them.
- Identify specific ways that CHE-facilitated community education/outreach can enhance the research and outreach efforts of the cancer center grant.
- Adapts/implements CHE-facilitated education/outreach strategies, aligned with the cancer center focus, and linked by NCI priorities and GMaP regional cancer health disparity issues.
- Identify CHE-facilitated education/outreach resources and strategies for further testing, as appropriate.

NON CHE Community Activities

- Develop and maintain academic and community partnerships to enable access to and delivery of culturally appropriate, evidence-based cancer information and education to underserved communities locally and regionally.
- Collaborate with academic, research, community, and regional NCI partners to develop, implement, and assess a disparities-focused education and outreach efforts linked to local, regional, and NCI research priorities.

Center to Reduce
Cancer Health Disparities
9609 Medical Center
Drive
MSC 9746
Sixth Floor, West Tower
Bethesda, MD 20892
Phone: 240-276-6170
Fax: 240-276-7862
CRCHD.CANCER.GOV