

NCI MENTORED CLINICAL SCIENTIST RESEARCH CAREER DEVELOPMENT AWARD TO PROMOTE DIVERSITY (K08)

Overview

This Funding Opportunity Announcement (FOA) is designed to promote career development of racially and ethnically diverse individuals who are underrepresented in health-related science and for those who are committed to a career in cancer health disparities, biomedical, behavioral, or translational cancer research.

Mechanisms of Support/Awards

The K08 award mechanism will be supported by this funding opportunity. The nature and scope of the K08 award program will vary by application, and the amounts provided by the participating ICs are not uniform; therefore, the size and duration of each award will also vary.

Research Objectives

The NCI Center to Reduce Cancer Health Disparities (CRCHD) recognizes a unique and compelling need to promote diversity in biomedical, behavioral, and translational cancer research. CRCHD expects efforts to diversify the workforce in these areas to lead to the recruitment of the most talented researchers from all groups.

The K08 award may be used by candidates with different levels of prior research training and at different stages in their career development. The program must be tailored to meet the individual needs of the candidate. Applicants may request 3 to 5 years of support; however, the actual duration of the award will depend upon the number of years of prior research experience, the demonstrated need for additional mentored

AT A GLANCE

Submission Deadlines:

February 12; June 12; & October 12, yearly

Resubmission Deadlines:

March 12; July 12; & November 12, yearly

Eligibility: Investigators from diverse backgrounds

Award Budget: Up to \$100,000 for salary and up to \$30,000 in research development support for 3 to 5 years

experience to achieve research independence, and the policy of NCI. Awards are not renewable and are not transferable from one PD/PI to another.

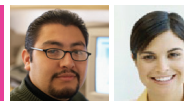
Allowable Costs

Salary: The total salary requested must be based on a full-time, 12-month staff appointment. The candidate must devote a minimum of 9 months (75% of full-time professional effort) to conducting health-related research. The remaining effort may be devoted to clinical, teaching, or other research pursuits and activities consistent with the objectives of the awarded grant.

Research Development Support: NCI will provide up to \$30,000 annually for research development support. These costs may be used for tuition and fees related to career development; research expenses, such as supplies, equipment, and technical personnel; travel to research meetings or training; and statistical services including personnel and computer time.

For the full text of this PAR, visit:

<http://grants1.nih.gov/grants/guide/pa-files/PAR-12-051.html> (K08)



NCI MENTORED CLINICAL SCIENTIST RESEARCH CAREER DEVELOPMENT AWARD TO PROMOTE DIVERSITY (K08)

Eligibility Requirements

Any individuals from diverse populations that have been shown to be underrepresented in biomedical, behavioral, clinical, and/or social sciences are eligible. Such candidates include individuals from underrepresented racial and ethnic groups as well as individuals with disabilities with the skills, knowledge, and resources necessary to carry out the proposed research.

Review

Applications will be evaluated for completeness by the Center for Scientific Review Group, NIH. Reviewers will provide an overall impact/priority score to reflect their assessment of the likelihood that the candidate will maintain a strong research program in consideration of the five core review criteria and additional review criteria. An application does not need to be strong in all categories to have a major impact. Review assignments will be shown in the eRA Commons.

Further Assistance

Grants.gov Customer Support

Telephone: 800-518-4726

Email: support@grants.gov

GrantsInfo

Telephone: 301-435-0714

Email: grantsInfo@od.nih.gov

eRA Commons Help Desk

Telephone: 301-402-7469 or (866) 504-9552

Email: commons@od.nih.gov

Grant Writing Tip Sheets

http://grants.nih.gov/grants/grant_tips.htm

Inquiries

Center to Reduce Cancer Health Disparities

John O. Ojeifo, M.D., Ph.D., M.B.A.

Center to Reduce Cancer Health Disparities

National Cancer Institute

9609 Medical Center Drive, MSC 9746

Sixth Floor, West Tower, 6W256

Bethesda, MD 20892

phone: 240-276-6186

fax: 240-276-7862

Email: ojeifojo@mail.nih.gov

Financial/Grants Management

Crystal Wolfrey

Office of Grants Administration

National Cancer Institute

9609 Medical Center Drive, MSC 9710

Second Floor, West Tower, 2W344

Bethesda, MD 20892

Telephone: 240-276-6277

Email: wolfreyc@mail.nih.gov

Peer Review

Referral Officer

Program Coordination and Referral Branch

Office of Referral, Review, and

Program Coordination

Division of Extramural Activities

National Cancer Institute

9609 Medical Center Drive, Room 7W412

Bethesda, MD 20892-9750

(for express mail, use Rockville, MD 20850)

Telephone: 240-276-6390

Fax: 240-276-7682

Email: ncirefof@dea.nci.nih.gov



Scan this QR code with your mobile device to go to CRCHD's home page..