

EXPLORATORY GRANT AWARD TO PROMOTE WORKFORCE DIVERSITY IN BASIC CANCER RESEARCH (R21)

Overview

This Funding Opportunity Announcement (FOA) invites applications from investigators from diverse populations with interest in research projects focused on the basic biology of cancer. This FOA is also designed to improve the diversity of the research workforce by supporting and recruiting eligible investigators from groups that have been shown to be underrepresented.

Mechanisms of Support/Awards

The R21 award mechanism will be supported by this funding opportunity. The total project period for applications using the R21 award mechanism may not exceed 2 years; direct costs are limited to \$275,000 over a 2-year period, with no more than \$200,000 in direct costs allowed in any single year. Exploratory/developmental grant support is for new projects only; competing renewal (formerly competing continuation) applications will not be accepted.

Research Objectives

Research applications should focus on basic cancer research and cancer health disparities, consistent with the research interests of both the Division of Cancer Biology (DCB), and the Center to Reduce Cancer Health Disparities (CRCHD).

AT A GLANCE

Submission Deadline:
June 22; November 30, yearly

Eligibility:
Investigators from diverse backgrounds

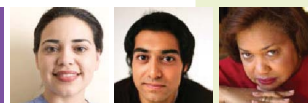
Award Budget:
\$275,000 direct costs for up to 2 years;
no more than \$200,000 in any given year

The R21 mechanism is intended to encourage new exploratory and developmental research projects. These studies may involve considerable risk but may lead to a breakthrough in a particular area or to the development of novel techniques, agents, methodologies, models, or applications that could have a major impact on a field of biomedical, behavioral, or clinical research. Research topics may include, but are not limited to, the following examples:

- Cell transformation, proliferation, or inhibition of cell death
- DNA damage/repair and related molecular, cytogenetic, epigenetic, and chromosomal effects
- Biological and chemical carcinogens and their properties, and mechanisms of oncogenesis and carcinogenesis
- Immune response to tumors and hematopoietic differentiation.

For the full text of this PAR, visit:

<http://grants.nih.gov/grants/guide/pa-files/PAR-15-053.html> (R21)



EXPLORATORY GRANT AWARD TO PROMOTE WORKFORCE DIVERSITY IN BASIC CANCER RESEARCH (R21)

Eligibility Requirements

Any individuals from diverse populations that have been shown to be underrepresented in biomedical, behavioral, clinical, and/or social sciences are eligible. Such candidates include individuals from underrepresented racial and ethnic groups as well as individuals with disabilities with the skills, knowledge, and resources necessary to carry out the proposed research.

Review

All applications will be evaluated for scientific and technical merit by appropriate Scientific Review Group(s) using the stated review criteria in the FOA. Following initial peer review, recommended applications will receive a second level of review by the National Cancer Advisory Board. Scientific and technical merit of the proposed project as determined by peer review, availability of funds, and relevance of the proposed project to program priorities will be considered in making funding decisions.

Further Assistance

Grants.gov Customer Support

Telephone: 800-518-4726

Email: support@grants.gov

Grants Info

Telephone: 301-435-0714

Email: grantsInfo@od.nih.gov

eRA Commons Help Desk

Telephone: 301-402-7469 or (866) 504-9552

Email: commons@od.nih.gov

Grant Writing Tip Sheets

http://grants.nih.gov/grants/grant_tips.htm

Inquiries

Center to Reduce Cancer Health Disparities

Abigail Soyombo, Ph.D., M.B.A.

Center to Reduce Cancer Health Disparities

National Cancer Institute

9609 Medical Center Drive, MSC 9746

Sixth Floor, West Tower, 6W256

Bethesda, MD 20892

Email: abigail.soyombo@nih.gov

Division of Cancer Biology

Susan A. McCarthy, Ph.D.

Division of Cancer Biology

National Cancer Institute

9609 Medical Center Drive, MSC 9748 Sixth

Floor, West Tower, 6W558 Bethesda, MD

20892

Email: mccarths@mail.nih.gov

Financial/Grants Management

Cammie T. La

Office of Grants Administration National
Cancer Institute

9609 Medical Center Drive, MSC 9710

Second Floor, West Tower, 2W344 Bethesda,
MD 20892

Email: lac@mail.nih.gov