



Intramural Continuing Umbrella of Research Experiences (iCURE) Application Webinar

iCURE Team
Shadab Hussain and Katelyn Garfinkel
Center To Reduce Cancer Health Disparities

Housekeeping

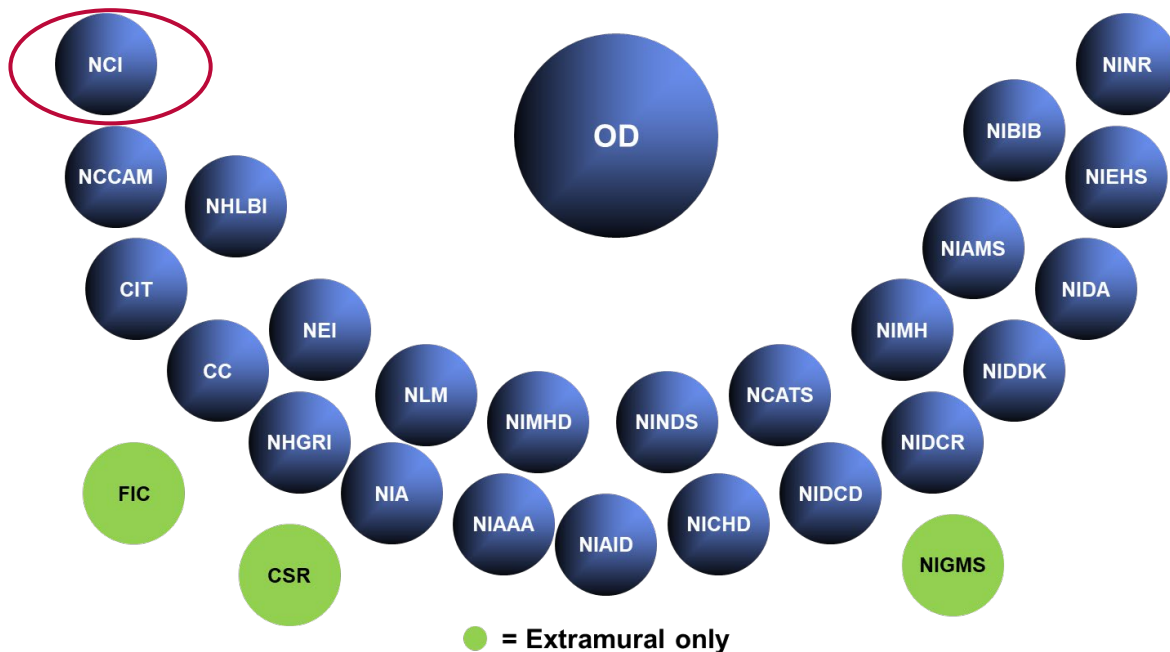
1. Webinar will be recorded and posted
2. Submit questions in chat
3. Closed captioning available
4. For audio/visual support:
 - Direct message Joshua Herrera

Goals

1. **Become oriented with NCI and iCURE**
2. **Understand iCURE Program Expectations and Experiences**
3. **Learn how to apply to iCURE through Train at NCI**



National Institutes of Health Has 27 Institutes and Centers



National Cancer Institute (NCI)



Mission: NCI leads, conducts, and supports cancer research across the nation to advance scientific knowledge and help all people live longer, healthier lives. <https://www.cancer.gov/about-nci>

Organization:

- Intramural: conduct research at NCI
- Extramural: support research across the nation

WHAT WE DO

genomics
public health
clinical trials
surveillance
scientific review
basic research
drug development
disparities
survivorship
cancer
epidemiology
research
treatment
prevention
immunotherapy
health behavior
cancer control
genetics
precision oncology
immunology
global health
cancer centers
grants
causes

Priorities:

- Research: cancer health disparities; data science; immunotherapy; clinical trials; etc.
- Training



NCI Supports Funding for Training in All Areas of Cancer Research



CANCER RESEARCH CONTINUUM





NCI at Shady Grove Campus

Center To Reduce Cancer Health Disparities (CRCHD)

CRCHD works to help reduce the unequal burden of cancer in our society by:

- Strengthening NCI's cancer research portfolio in basic, clinical, translational, and population-based research.
- Building regional networks to foster collaboration, enhance capacity in disparities research and career development, and disseminate culturally appropriate, evidence-based cancer information to underserved communities.
- Providing technical expertise, information, and advice to NCI leadership on strategic priorities, program direction, and scientific policy to strengthen cancer health disparities research.



Intramural Continuing Umbrella of Research Experiences (iCURE)

iCURE Goals:

- Enhance research workforce competitiveness at NCI
- Promote career advancement of scholars
- Foster a supportive environment in the NCI intramural community



iCURE Supports Research Experiences at All Three Campuses of NCI in Maryland



- Mentored research experiences on **NCI campuses** in Bethesda, Shady Grove (Rockville) and Frederick, Maryland
- Supports **postbacs** (up to 2 years), **graduate students** (2 years) *(Note* will not be accepting applications this year)* and **postdocs** (3 years)
- Centralized review and program-facilitated matches for scholars to NCI PIs; **applicants do not need to pre-identify a PI to apply**



iCURE Supports Scholars to Conduct Research Across the NCI



- **Center for Cancer Research ([CCR](#))**



- Basic and clinical cancer research

- **Center for Global Health ([CGH](#))**



- Global cancer research, implementation science, clinical research, and clinical trials

- **Division of Cancer Epidemiology and Genetics ([DCEG](#))**



- Cancer epidemiology and genetic research

- **Division of Cancer Control and Population Sciences ([DCCPS](#))**



- Reduce cancer risk, incidence and death and enhance quality of life for cancer survivors

iCURE Support Benefits Package for Research Experiences



- Stipend paid monthly based on education level and relevant experience
- Health Insurance by FAES through OITE
- Participation in NIH Transshare Program
- Support for training opportunities such as supplies, courses and conference attendance
- Relocation Allowance



Career Advancement Goals for iCURE Scholars



PB

Postbac/Post Masters: up to 2 yrs of support
Acceptance into a graduate programs, PhD, MD/PhD, MD, PharmD, etc., professional programs



PD

Postdoctoral Fellows: up to 3 yrs of support
Publish, apply for grants, acquire skills for independence, transition to industry or investigator



iCURE Program Experience



Support from iCURE Program Staff

- Individual/group check-ins
- Resource Guidance
- Mock interviews, CV review, etc. (Career Guidance)
- Training Navigation

iCURE Cohort Activities

- Journal Club
- Scholar of the Month
- Outreach and other Gatherings

Research

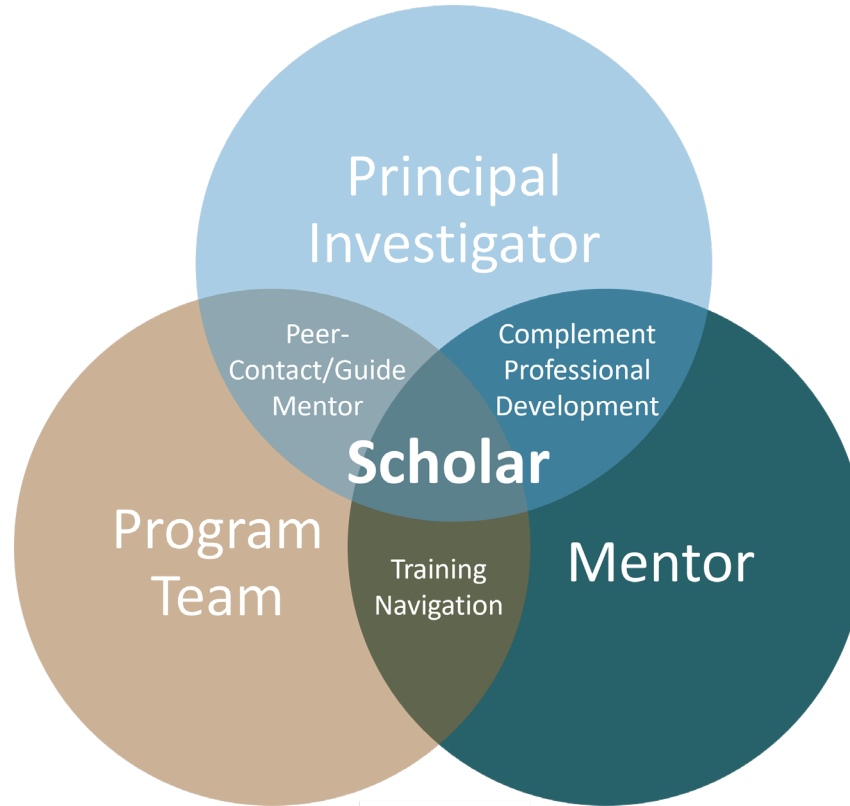
Professional Development Activities

- iCURE Lunch and Learns
- Support for Conferences and Trainings
- Collaborations with other NCI/NIH Trainees

iCURE Mentor – Scholar Network

- Mutual Matching of Outside Mentor
- Complements Research Experience
- Career and professional guidance
- Cultural and social support
- Peer mentorship

Mentorship Through the iCURE Mentor – Scholar Network



NIH Office of Intramural Training & Education (OITE)

Helping trainees and fellows develop scientific, professional, well-being and resilience skills.

- Responsible for all NIH intramural trainees
- Professional development
- Job fairs and other opportunities
- Individual and small group meetings
- Wellness and resilience
 - [Becoming a Resilient Scientist](#)
 - Mindfulness Meditation



<https://www.training.nih.gov/>

But don't take my word for it...



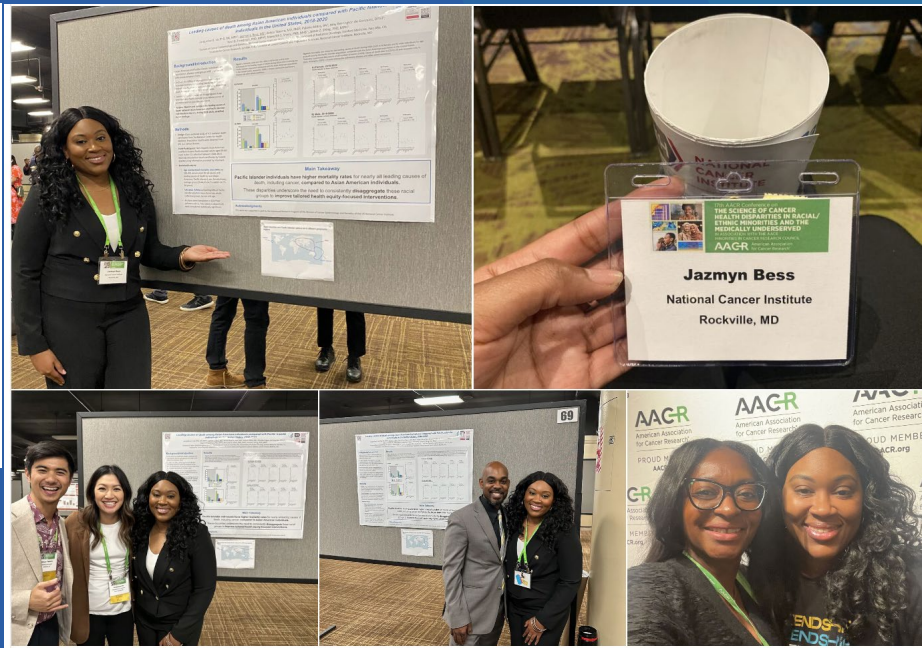
Jazmyn Bess

Postbaccalaureate CRTA Fellow/iCURE Scholar
3d

So grateful for the opportunity to attend and present at the American Association for Cancer Research 17th Annual Health Disparities Conference in Los Angeles, CA this past week. Thank you [Jacqueline Bui Vo Jaimie Shing, PhD, MPH](#) for the opportunity and [Paloma Mitra](#) for constant support!

Had a amazing time connecting, learning, and growing! Thank you to the Intramural Continuing Umbrella of Research Experiences (iCURE) program for making this experience possible! [Gregory Adams, Jr. MS PhD](#) and [Adana A.M. Llanos, PhD, MPH](#) thank you for your constant support!

The fight to eradicate cancer disparities is far from over, let's keep pushing!



My experience in the iCURE program has been nothing short of spectacular. Very few programs take the holistic and hands-on approach embraced by the iCURE program. The iCURE team is tirelessly and relentlessly invested in the success of trainees. I appreciate the mission of the iCURE program, which provides its scholars with a truly immersive experience. By being an iCURE scholar you not only receive all that NIH offers trainees, but also the additional support of the iCURE leadership. This extra support is absolutely invaluable. It's really helpful knowing that there are so many people in your corner and rooting for you.



Sheryse Taylor, PhD
-iCURE alumni

NCI's Commitment to Training and iCURE

<https://www.cancer.gov/grants-training/nci-bottom-line-blog/2026/commitment-to-cancer-research-training>



About Cancer ▾ Cancer Types ▾ Research ▾ Grants & Training ▾ News & Events ▾ About NCI ▾

[Home](#) > [Grants & Training](#) > [NCI Bottom Line Blog](#) > NCI Remains Committed to Cancer Research Training

NCI Remains Committed to Cancer Research Training

[Subscribe](#)

January 13, 2026, by Sanya Springfield, Ph.D., Nastaran Zahir, Ph.D., Douglas Lowy, M.D., Nelson Aguila, D.V.M.

At NCI, we recognize that the discoveries that will redefine cancer research are already taking shape in the hands of today's trainees and early-stage investigators. By continuing to invest in their growth, we are cultivating the leaders and innovators who will chart the future of cancer research.

We are eager to start a new year. In 2026, NCI is strengthening our commitment to train the next generation of researchers and support a robust and skilled cancer research workforce. The future of cancer discovery is being shaped now, and it is our responsibility to ensure emerging talent is ready to lead it.

Cancer research training that supports everyone, from middle school students to established, independent scientists, is a fundamental pillar of



- NCI's Intramural Continuing Umbrella of Research Experiences ([iCURE](#)) program is for individual students and fellows to gain research experience at NCI. Now in its eighth year, a cohort of approximately 10 iCURE scholars, including postbaccalaureate fellows, graduate students, and postdoctoral fellows selected through a competitive application process, spend a year conducting research alongside NCI experts at three NIH campuses in Maryland: Bethesda, Frederick, and Rockville.

This could be you next year



iCURE Application Cycle & How to Apply

Applications must be submitted by February 16, 2026



Application Timeline



Contact the team by emailing: iCURE@nih.gov
Train at NCI: <https://trainatnci.cancer.gov/>

iCURE Eligibility

Must be a United States citizen, permanent resident, or non-citizen national*

*Non-citizen national describes individuals that are native to an American territorial possession and have been lawfully admitted for permanent residence in the United States. Please refer to the [US Department of State](#) for additional clarification.

Post-baccalaureate (Incl. Post Master's)

- College Grad within 3 yrs of beginning of program
- Or master's degree within six months of beginning of program
- Must be available for a 1-2 yr fellowship

Postdoctoral Fellows

- Must have a PhD, MD, or equivalent by proposed iCURE start time
- No more than 5 yrs of relevant research experience
- Must be available for a 3 yr fellowship

Apply to iCURE – Application Process



- Check out [iCURE](#) on [Train at NCI](#)
- Review [eligibility](#) criteria
- Review [Guidelines](#) and *How to Apply*

NIH NATIONAL CANCER INSTITUTE
Train at NCI

Search Log In Register

Home Find a Training Program Training Programs Postdoc Finder Contact Us

Train at NCI

The National Cancer Institute (NCI) is the federal government's principal agency for cancer research and training.

Interested in joining our mission? Train at NCI provides prospective applicants an overview of a variety of NCI training programs that will appeal to researchers at different stages of their careers.

Why Train at NCI?

NCI conducts research across the cancer care continuum to advance scientific knowledge and help people live longer, healthier lives. At our Bethesda, Shady Grove, and Frederick campuses, you will find leading experts in basic, clinical, translational, or genomic and population-based research. In addition to working side-by-side with world-class scientists, you will find extensive professional career and development opportunities, fellow-led groups that build a sense of community, and access to additional training, courses, and workshops to facilitate your project and career goals.

Train at NCI Portal

Submit and manage applications to select NCI training programs in the portal.

Log In


How to Log into the System

Applicant: Register

A prospective applicant can begin by registering with Login.gov to obtain a username and password.

CLICK HERE





NATIONAL CANCER INSTITUTE

Train at NCI

Log In

Register

[Home](#)
[Find a Training Program](#)
[NCI Training Programs](#)
[Contact Us](#)

[Home](#)

Register

Before you can log in to Train at NCI, you must have established your login credentials (username and password) at an authorized login service. If you are a prospective applicant to an NCI Training Program, you should first establish your login credentials at login.gov. If you are NIH or IMS staff, this step is unnecessary. You can proceed to the Log In page and use your existing login credentials to access the system.

Applicants - must register with [Login.gov](#) unless you have NIH Login credentials

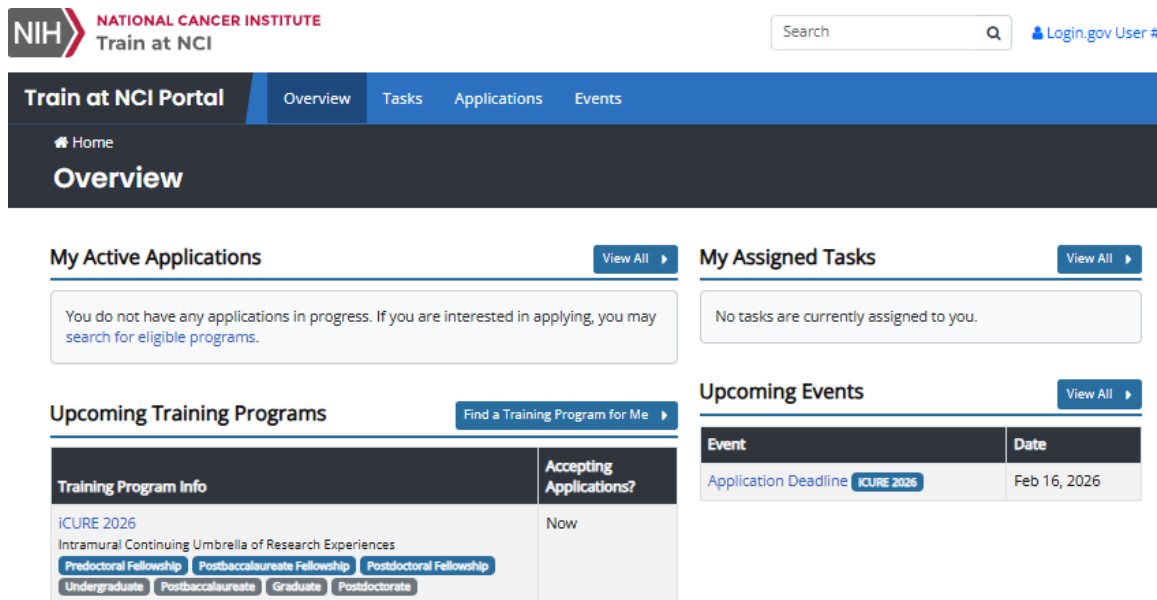
NIH Staff - proceed to the [Log In](#) page and use your existing NIH Login credentials

IMS Employees - proceed to the [Log In](#) page and use your existing IMS credentials

If you need assistance, please [Contact Us](#).

Applicant: Choose training program

After logging in, the prospective applicant can find an upcoming training program that is accepting applications.



The screenshot shows the 'Train at NCI Portal' interface. At the top, there's a navigation bar with 'Overview', 'Tasks', 'Applications', and 'Events'. Below this is a 'Home' link and an 'Overview' section. The main content area is divided into three sections: 'My Active Applications', 'My Assigned Tasks', and 'Upcoming Training Programs'. The 'My Active Applications' section shows a message: 'You do not have any applications in progress. If you are interested in applying, you may search for eligible programs.' The 'My Assigned Tasks' section shows a message: 'No tasks are currently assigned to you.' The 'Upcoming Training Programs' section features a button 'Find a Training Program for Me' and a table of programs. The table has two columns: 'Training Program Info' and 'Accepting Applications?'. The first row is for 'iCURE 2026', which is described as 'Intramural Continuing Umbrella of Research Experiences'. It lists several fellowship types: 'Predoctoral Fellowship', 'Postbaccalaureate Fellowship', 'Postdoctoral Fellowship', 'Undergraduate', 'Postbaccalaureate', 'Graduate', and 'Postdoctorate'. The 'Accepting Applications?' column shows 'Now'.

Training Program Info	Accepting Applications?
iCURE 2026 Intramural Continuing Umbrella of Research Experiences Predoctoral Fellowship Postbaccalaureate Fellowship Postdoctoral Fellowship Undergraduate Postbaccalaureate Graduate Postdoctorate	Now

CLICK on
iCURE



Apply to iCURE – Application Information



- **Contact Information:** Name, Address, Contact information
- **Citizenship**
- **Demographics*:** Race, Ethnicity details. (Voluntary)

*This information **IS NOT** used to make funding decisions or assess applicant eligibility; all fields are voluntary

- **Education:** Degrees awarded or expected, including GPA information
- **Research Interests:** Must select at least 2, but no more than 5 research interests. These will be used to help investigators find your application.

Apply to iCURE – Application Information



- **Application Type:** Post-Baccalaureate (including Post-Master's) or Postdoctoral Fellow
- **Are you currently funded by NCI or other NIH IRP funding?**
- **Do you have a family member employed at NCI/NIH?**
- **NIH Training:** Did you receive or are you receiving training at the NIH?
- **Do you want your application released to NCI Investigators?**
- **How did you hear about this opportunity?**

Apply to iCURE – Supplemental Documents



- **Transcript:** A copy of your most recent (unofficial) transcript is required
- **Assurance Letter:** For postdoctoral applicants in an accredited doctoral program who have not fulfilled degree requirements. To assure that applicant will receive their degree by start of fellowship
- **Three Reference Letters** (Next Slide)
- **Curriculum Vitae or NIH Biosketch** (Details in following slides)

Apply to iCURE – References

- Contact information for **three** references:
 - The program will email your references once you submit your application.
 - Important reminder – it's always a good idea to communicate with your references before listing them (ask if they will be able to provide a positive reference for you)

Apply to iCURE – Curriculum Vitae (1/2)



- **Education:** Please list all colleges and universities attended and any other relevant training. Include dates attended, academic major, degree, year awarded/expected
- **Work Experience:** Please list current and past employment. Include position title, employer name, dates of employment and brief description of duties and accomplishments.
- **Bibliography:** Please list all publications and indicate whether they are "published", "in press", "submitted" or "in preparation". Please list full-length manuscripts and abstracts separately.

Apply to iCURE – Curriculum Vitae (2/2)



Please note other items in CV as applicable:

- Board Certification
- Committee Memberships
- Grants Awarded or Pending
- Patents awarded or pending
- Peer-review service
- Professional licenses
- Professional society memberships
- Scientific presentations (separate oral and poster presentations)
- Teaching experience

NIH Biosketch format is also acceptable.

Apply to iCURE – Personal Statement



- Answer **each** of the following questions.
- 1. Research Interest:** Describe your interest in cancer research. Discuss how your experiences and background have influenced your research interests. Please include examples of your motivation, excitement, and drive for research. (250 words or less)
 - 2. Short Term Goals:** In the next 2-3 years what do you expect to accomplish; how will training at NCI help you with your immediate career goals? (250 words or less)
 - 3. Long Term Goals:** Where do you see your career in 5-10 years? How will being an iCURE scholar help you fulfill your goals? (250 words or less)

2026 Timeline and Contact Information

Applications must be submitted by February 16, 2026

Application Timeline



Contact the team by emailing: iCURE@nih.gov

Webpage: <https://trainatnci.cancer.gov/programs/icure/>

iCURE Program Team

iCURE@nih.gov



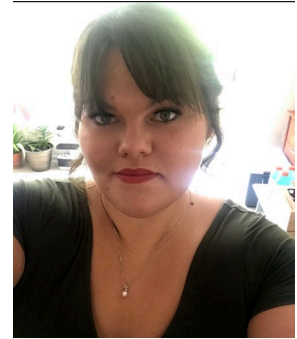
Dr. Jessica
Calzola



Dr. Gregory
Adams, Jr.



Dr. Shadab
Hussain



Mrs. Katelyn
Garfinkel

Thank You.
QUESTIONS?

Contact: *iCURE@nih.gov*



**NATIONAL
CANCER
INSTITUTE**

www.cancer.gov

www.cancer.gov/espanol