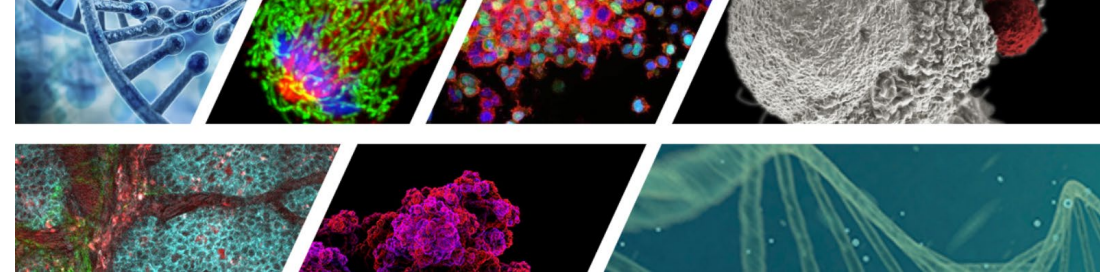


NCI Division of Cancer Biology

Introduction to the NIH Grants System and NCI's Division of Cancer Biology

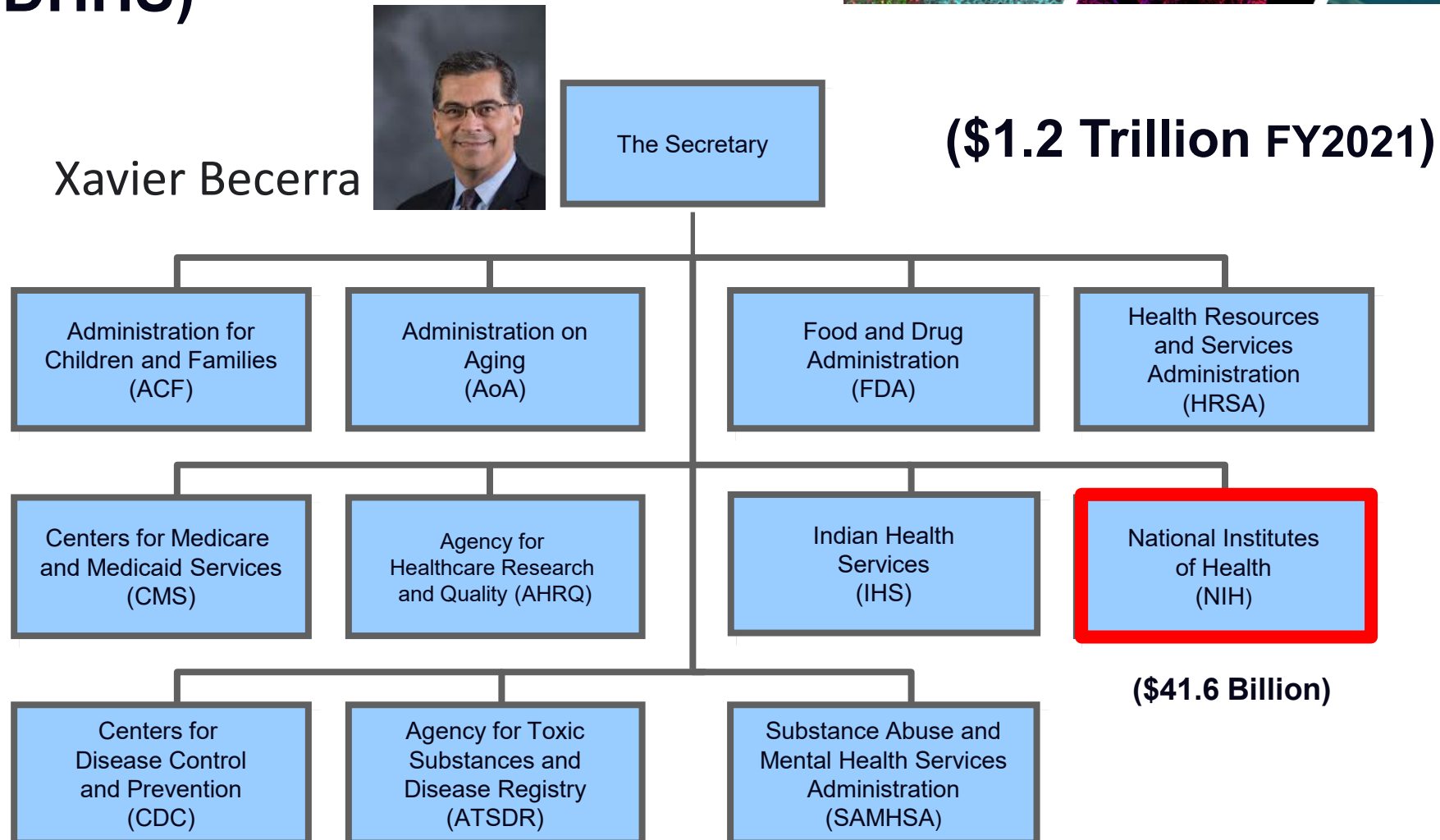
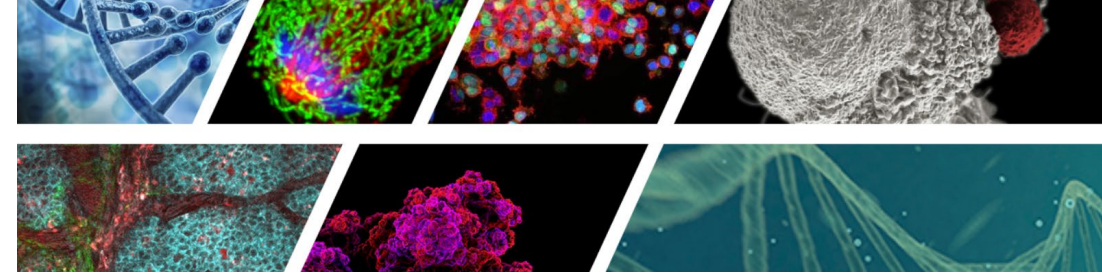
**Ian Fingerman Ph.D.
Program Director
NCI/NIH**

Outline



- **Overview of NIH, NCI, and the Division of Cancer Biology**
- **Fundamentals of the NIH Grants System**

NIH is an agency within the U.S. Department of Health and Human Services (DHHS)



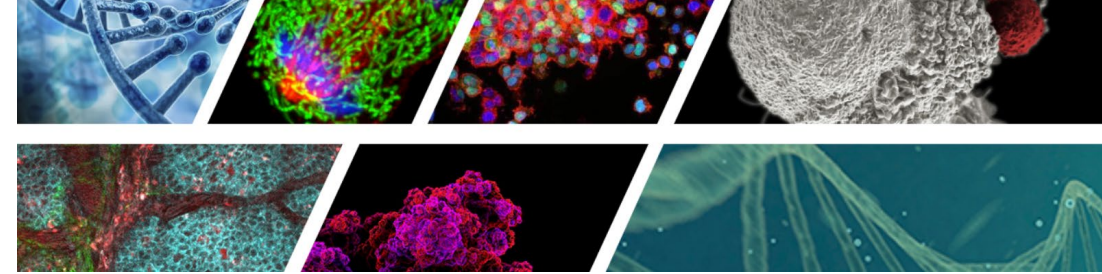
The National Institutes of Health



**NIH Acting Director
Lawrence Tabak, D.D.S, Ph.D.**

The NIH is divided into 27 different Institutes and Centers. 24 have funding authority. Each Center/Institute:

- Has its own research mission
- Has its own strategic plan (how they will accomplish their mission)
- Their own funding opportunities



OD

NCI

NEI

NIEHS

NIGMS

NHLBI

NHGRI

NIMH

NIMHD

NIA

NIAAA

NINDS

NINR

NIAID

NIAMS

NLM

CC

NIBIB

NICHD

CIT

CSR

NIDCD

NIDCR

FIC

NCATS

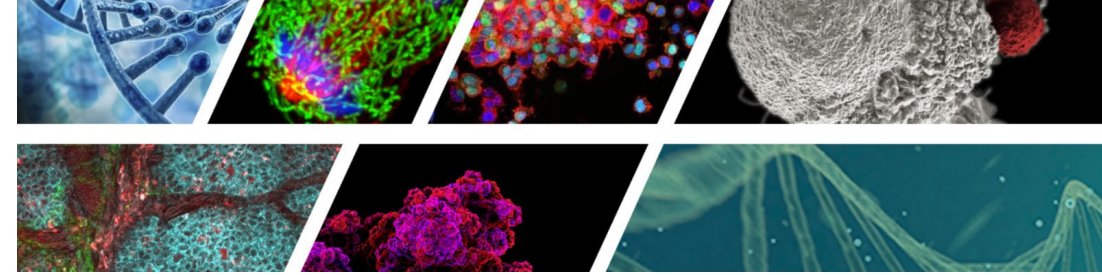
NIDDK

NIDA

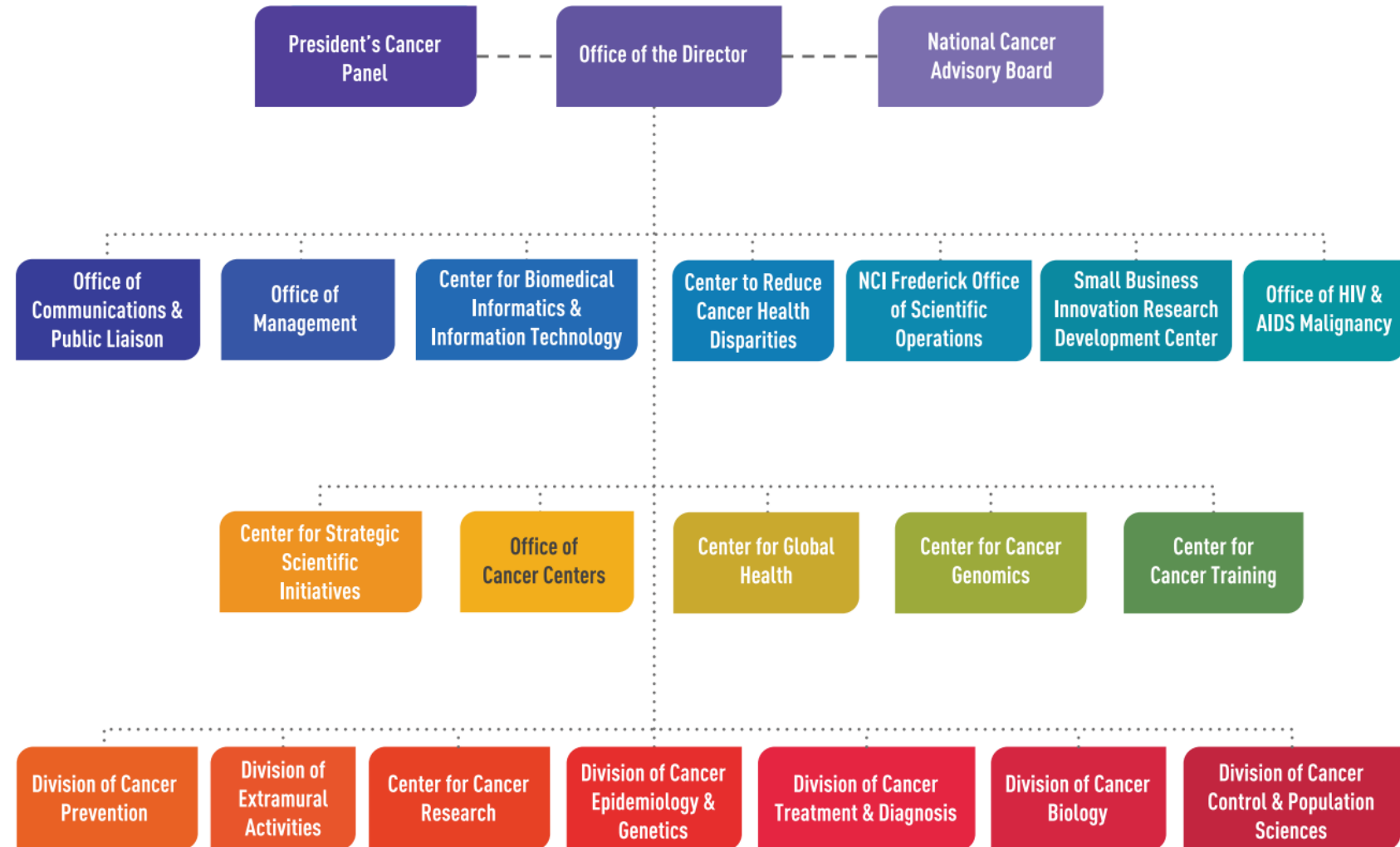
NCCIH



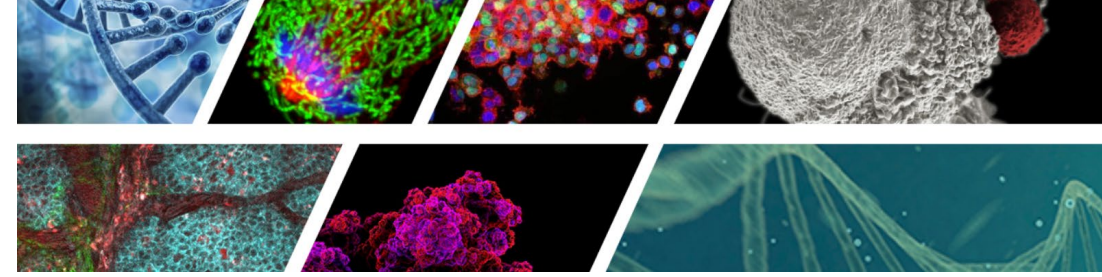
Organization of the National Cancer Institute



Director
Norman “Ned”
Sharpless, MD



Organization of the National Cancer Institute



National Cancer Institute
(FY2021 budget: \$6.56 Billion)

Research Management
Support (~8% budget)

Intramural Research
(~17% budget)

Center for Cancer
Research

Division of Cancer
Epidemiology and
Genetics

NCI-Frederick

Extramural Programs
(~75% budget, ~7000 grants)

Office of the
Director
(~2000 grants)

Division of Cancer
Biology (~2000

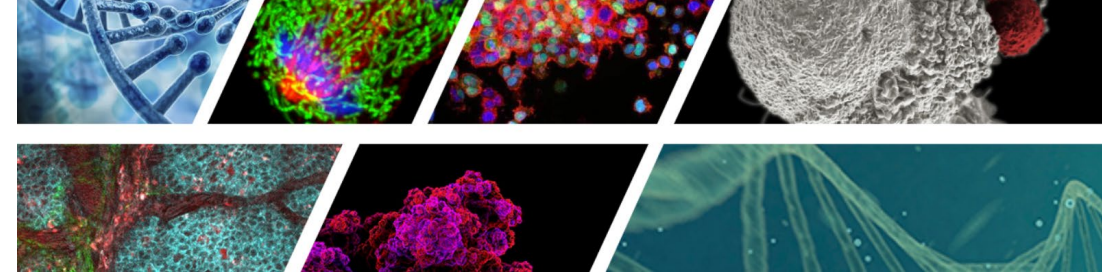
Division of Cancer
Treatment and
Diagnosis (~1700
grants)

Division of
Extramural
Activities (0 grants)

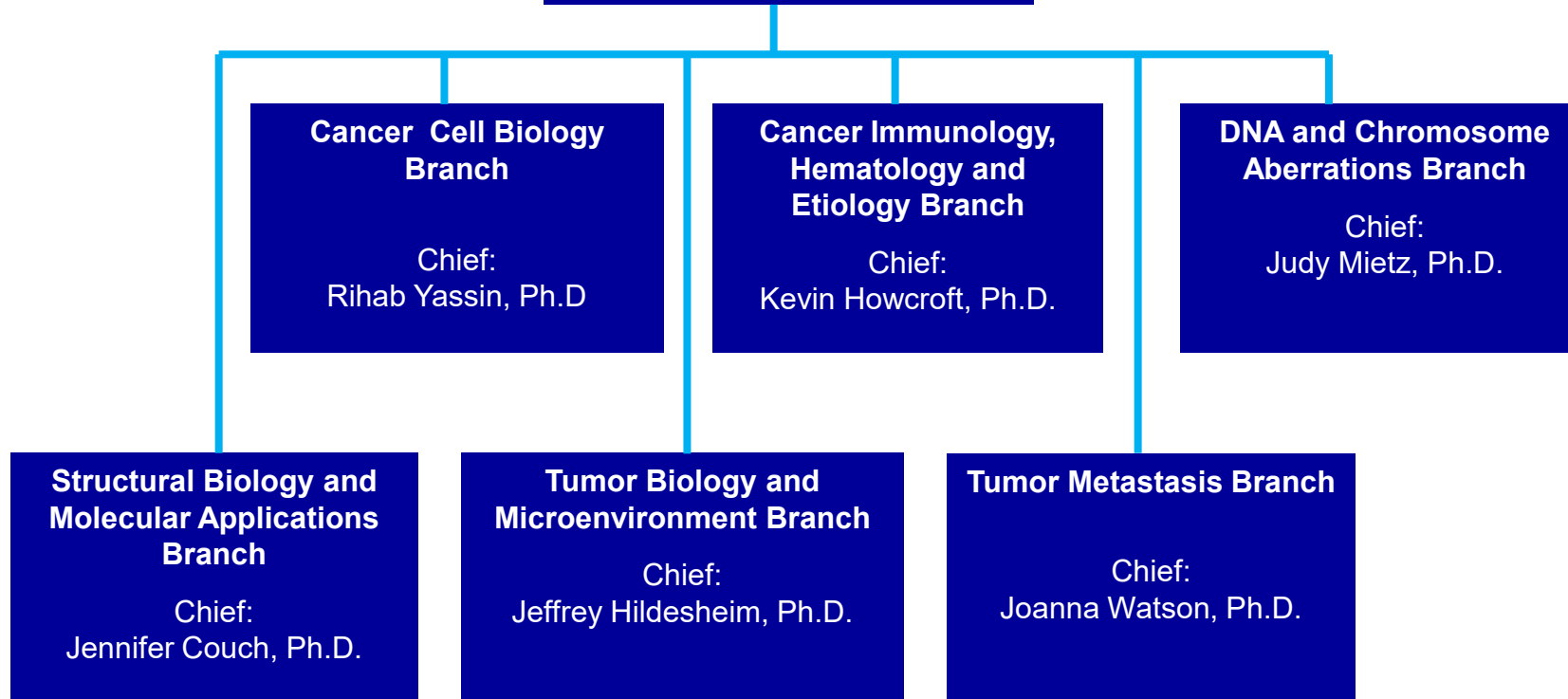
Division of Cancer
Prevention (~500
grts.)

Division of Cancer
Control and
Population
Sciences (~700

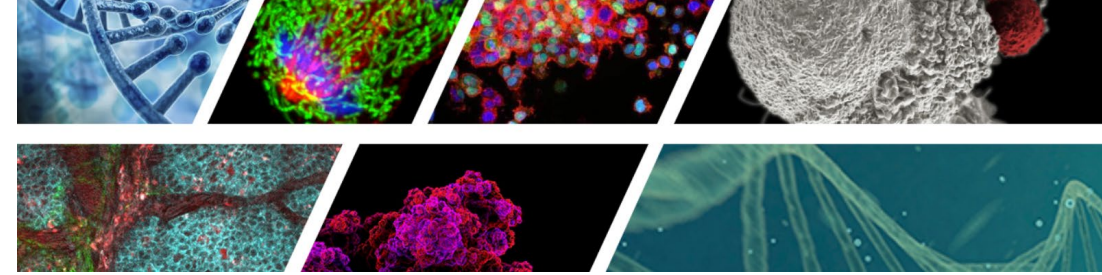
The Division of Cancer Biology (DCB)



Office of the Director
Director:
Daniel Gallahan, Ph.D

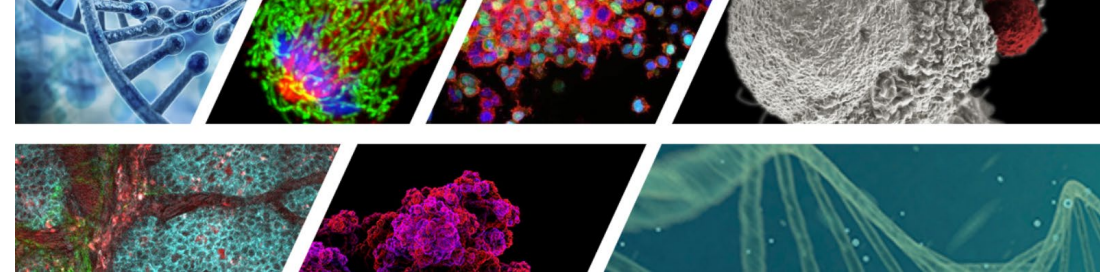


DCB Supported Research Programs



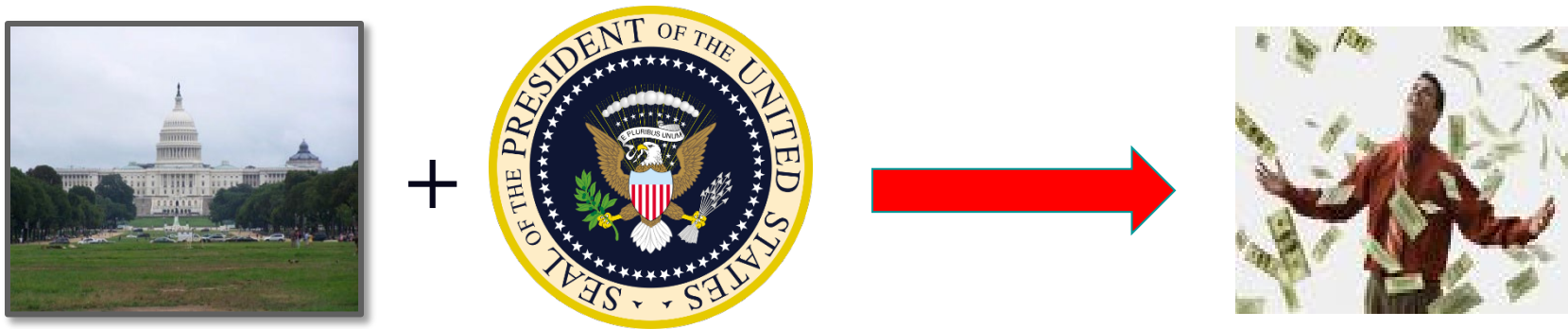
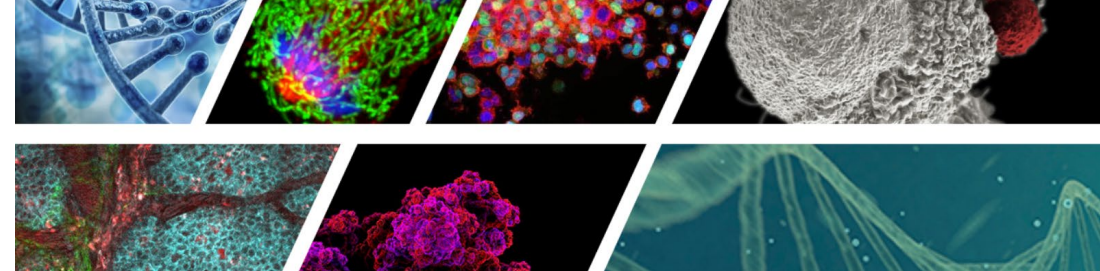
- [Acquired Resistance to Therapy Network \(ARTNet\)](#)
- [Alliance of Glycobiologists for Cancer Research](#)
- [Barrett's Esophagus Translational Research Network \(BETRNet\)](#)
- [Cancer Systems Biology Consortium \(CSBC\)](#)
- [Cancer Tissue Engineering Collaborative \(TEC\)](#)
- [Cellular Cancer Biology Imaging Research \(CCBIR\)](#)
- [Metastasis Research Network \(MetNet\)](#)
- [Molecular and Cellular Characterization of Screen-Detected Lesions](#)
- [Onco-Aging Consortium \(OAC\)](#)
- [Oncology Models Forum](#)
- [Pancreatic Ductal Adenocarcinoma \(PDAC\) Stromal Reprogramming Consortium](#)
- [Patient-Derived Models of Cancer \(PDMC\)](#)
- [Physical Sciences - Oncology Network \(PS-ON\)](#)
- [Program on the Origins of Gastroesophageal Cancers](#)
- [Translational and Basic Science Research in Early Lesions \(TBEL\)](#)

Outline



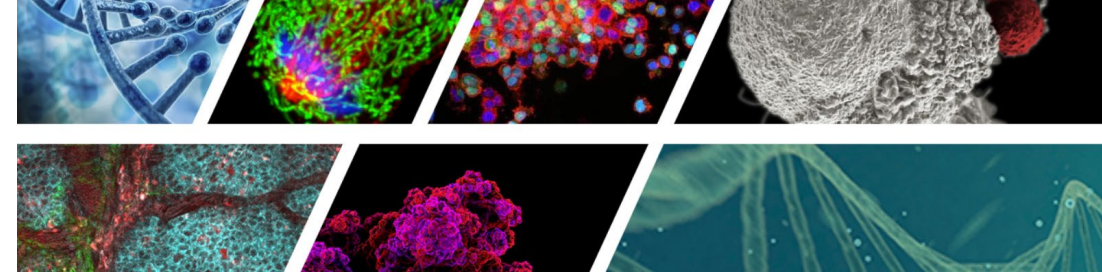
- Overview of NIH, NCI, and the Division of Cancer Biology
- **Fundamentals of the NIH Grants System**

Appropriations: Funding The NIH



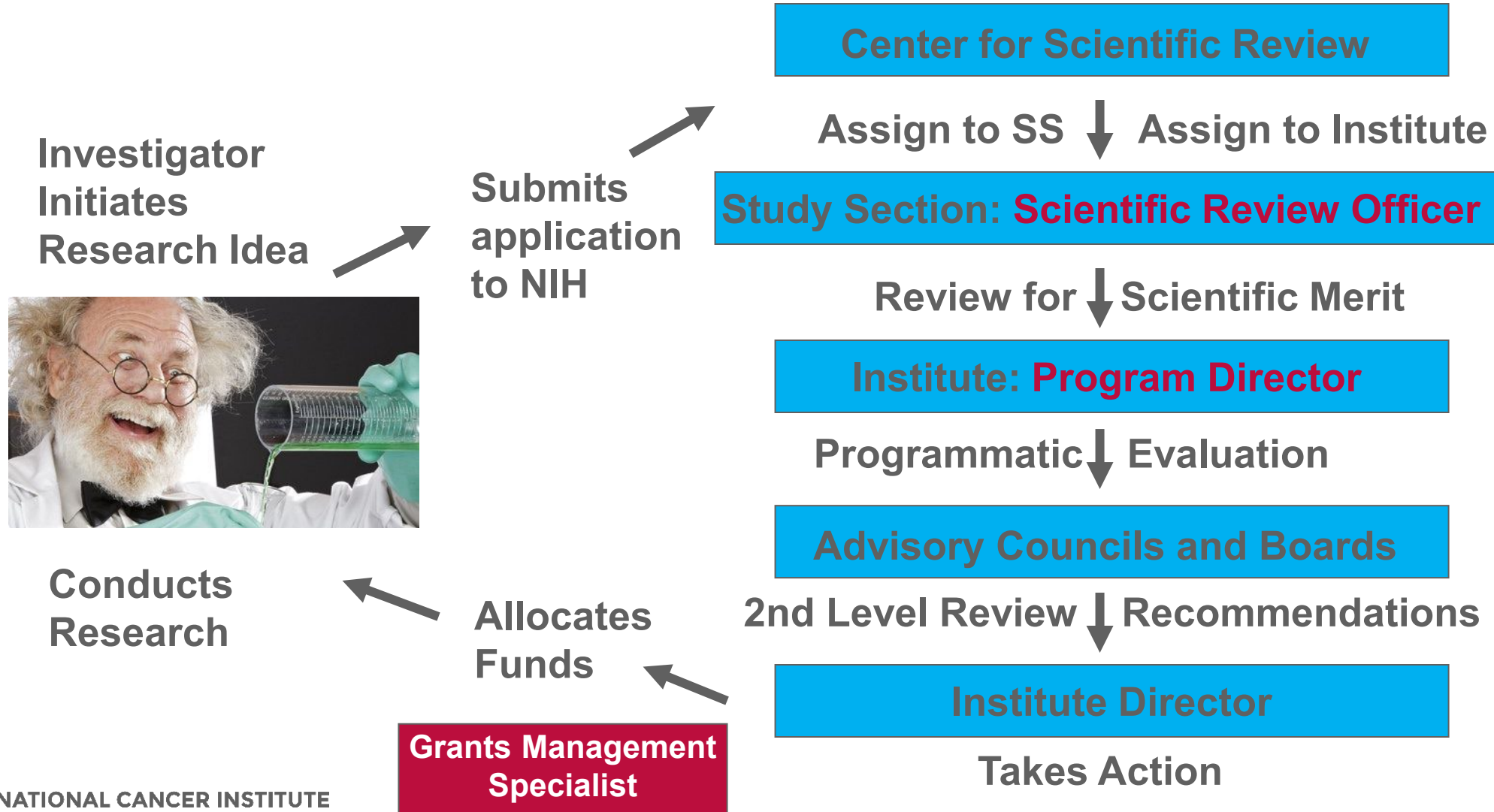
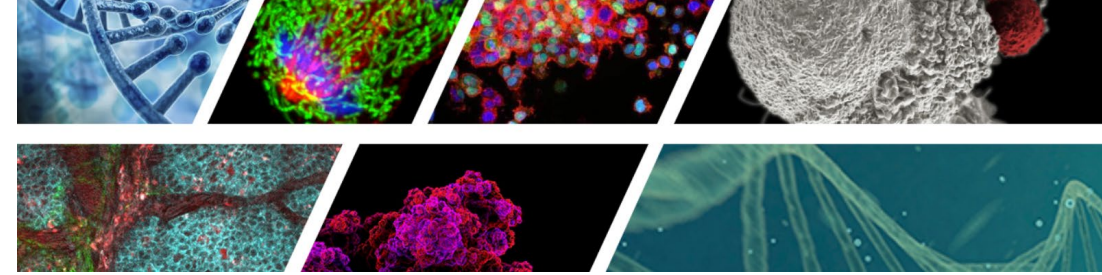
- The NIH budget is specified by Congress through a yearly appropriations bill which is signed into law by the President.
- Provides each IC with specific funds to carry out their respective programs and missions.
- The fiscal year begins October 1.

How Does NIH Solicit Applications?



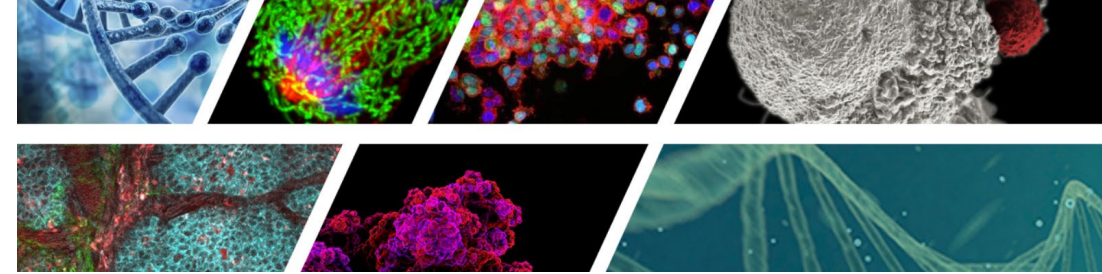
- Funding Opportunity Announcements (FOA) published through the NIH Guide (<http://grants.nih.gov/grants/guide/>)
- Parent Announcements cover basic mechanisms (e.g. Parent R01)
 - Investigator-initiated research projects
- Special Announcements to fill gaps
 - Requests for applications (RFAs)
 - Program Announcement (PA) / NOSI
 - Program Announcement with Special Review (PAR)
 - Program Announcement with Set Aside (PAS)

The NIH Grant Application Cycle



The NIH Extramural Team

A team of experts will guide your application from conception through award

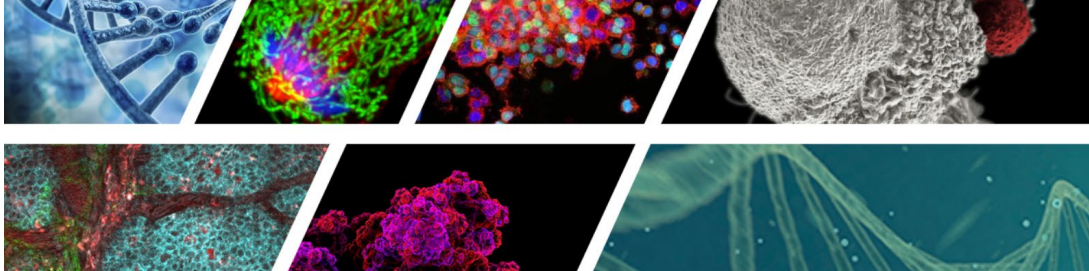


- Program directors provide scientific and technical advice about your research and application
- GMS manage the administrative and fiscal aspects of an award.



- SROs manage the scientific and technical review of applications. I can make suggestions regarding the study section and how the application is handles at review.

The NIH Extramural Team



Research
Application



Center for Scientific
Review



Peer
Review

NIH Institute



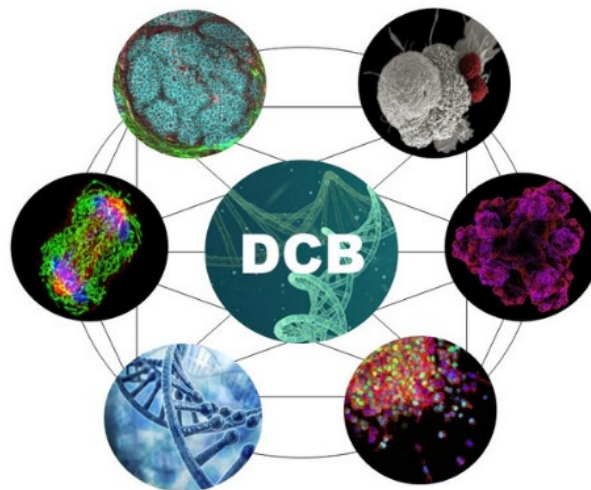
Council
Review



Funding



Timeline of who is working on your application at any given time in the cycle.



**NATIONAL
CANCER
INSTITUTE**

www.cancer.gov

www.cancer.gov/espanol