

CRCHD: Diversity Training and Cancer Health Disparities Research Opportunities

*Alison Lin, PhD
Deputy Chief, Diversity Training Branch
NCI Center to Reduce Cancer Health Disparities*

NCI Center to Reduce Cancer Health Disparities (CRCHD)

Mission

- Strengthens the NCI cancer research portfolio in basic, clinical, translational, and population-based research to **address cancer health disparities** through collaborations across NCI
- **Advises NCI leadership** on strategic priorities, program direction, and scientific policy to strengthen cancer disparities research, diversity training, women's health and sexual and gender minority opportunities
- Leads NCI's efforts to **increase workforce diversity** through the training of students and investigators from diverse backgrounds

CRCHD Programs

Diversity Training



Partnerships

- Partnerships to Advance Cancer Health Equity (PACHE)

Cancer Health Disparities Research

- Basic research
- Translational research

Networks

- Geographic Management of Cancer Health Disparities Program (GMaP)
- National Outreach Network (NON)

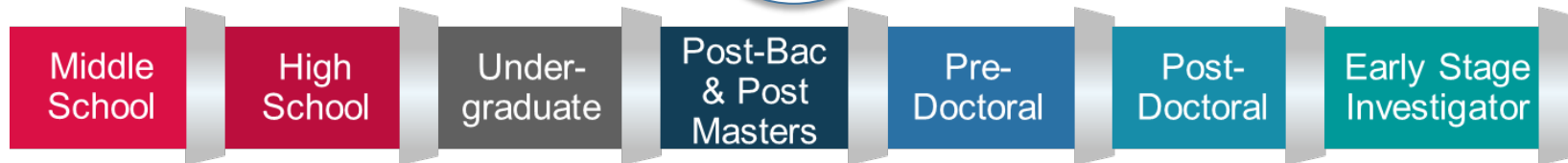


Extramural Diversity-Focused Training Program: Continuing Umbrella of Research Experiences

Website: <https://www.cancer.gov/about-nci/organization/crchd/diversity-training/cure>

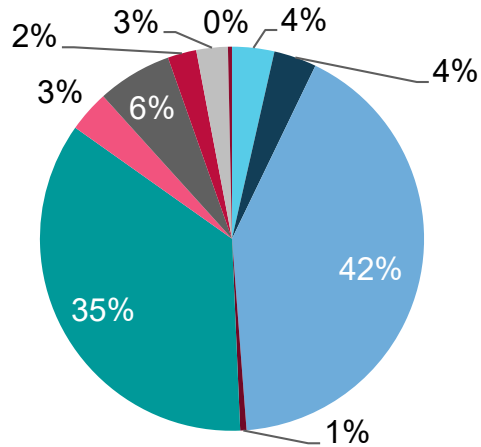
Purpose:

- Support research experiences of underrepresented students and scientists
- Promote professional and career development
- Help the trainees achieve research independence



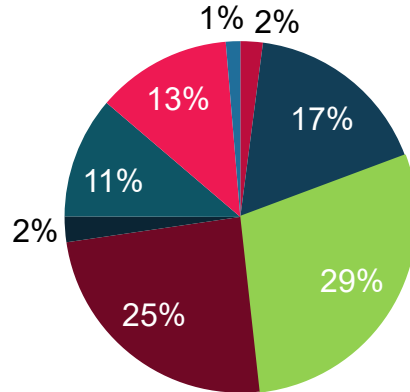
CURE Trainees (2001-2018, n = 4,753) are Diverse

Demographics



- American Indian or Alaska Native
- Asian
- Black or African American
- Disability
- Hispanic or Latino
- Native Hawaiian or Pacific Islander
- Unknown
- White
- Low SES
- More than One Race

Career Levels



- Middle School
- High School
- Undergraduate
- Graduate
- Post-Bac/Post-Masters
- Postdoc
- Investigators
- Unknown



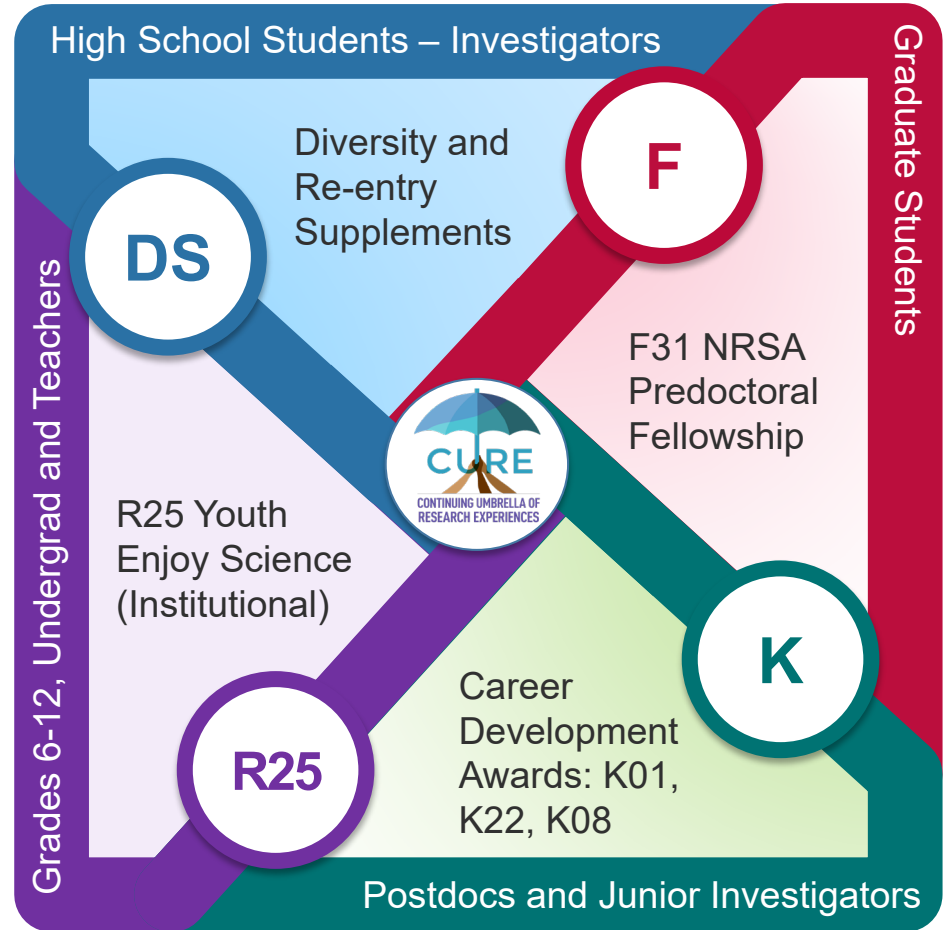
CURE Program Strategies and Training Mechanisms

CURE STRATEGIES

Increase the size of the talent pool

Emphasize scientific areas of greatest need

Expand and extend the period of training

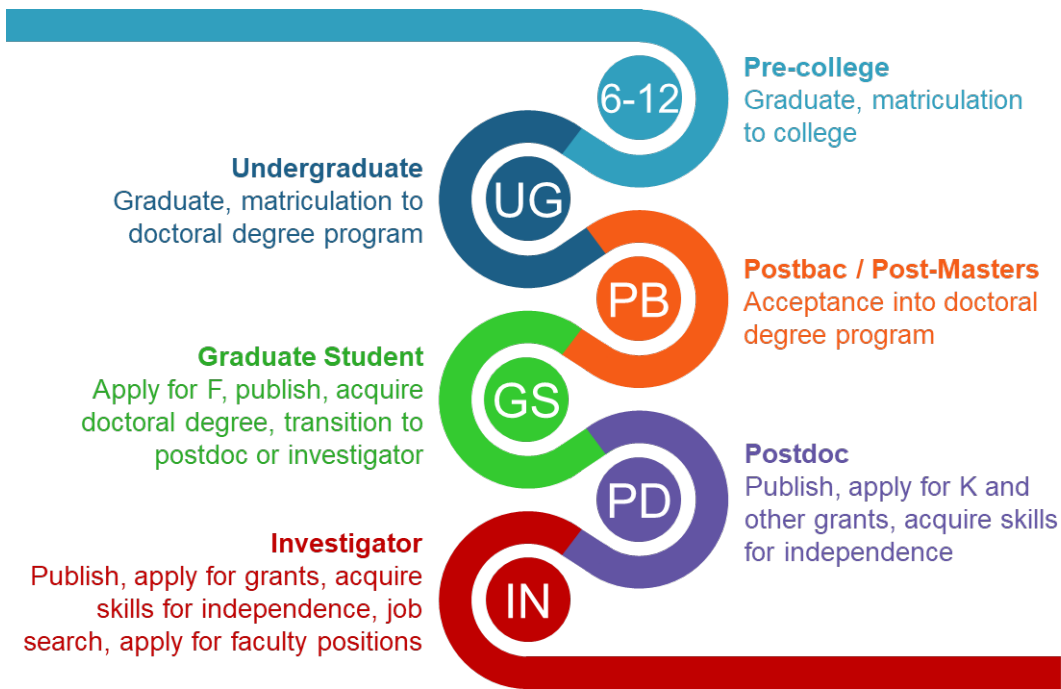


CURE is More Than a Pipeline

Ecosystem of Support

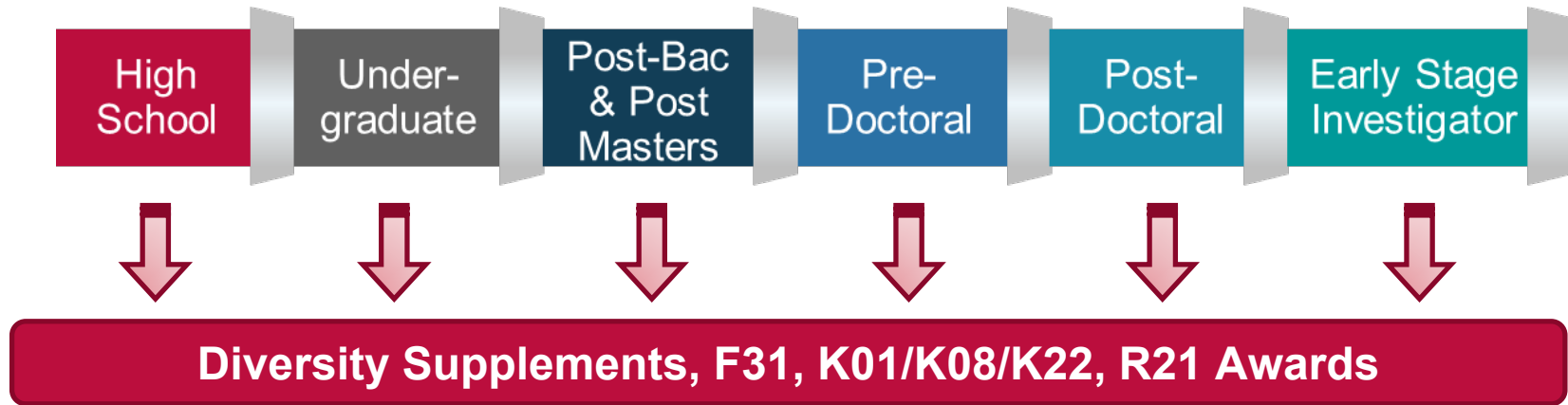


Set Clear Goals and Monitor Progress



Supplements within the CURE: Diversity and Re-Entry

- Provide additional funding to currently active NIH grants (parent grants) to support research experiences of trainees
- Parent grant must have **at least two years** of active status at the time of supplement application
- Application receipt: **Oct 1 – Dec 1** and **Feb 1 – Mar 30**
- A **bridge** for candidates to progress to the next academic/career level



Research Supplements to Promote Diversity in Health-Related Research (PA-18-906, Diversity Supplements)



- Candidate must be US citizen, non-citizen nationals or permanent residents, and from underrepresented populations: race/ethnicity, disability, disadvantaged background
- <https://grants.nih.gov/grants/guide/pa-files/PA-18-906.html>
- <http://www.cancer.gov/about-nci/organization/crchd/diversity-training/cure/DSGuidelines>

Diversity Supplements: Special Eligibility Criteria for Graduate Students and Postdoctoral Fellows



- **No concurrent PHS support for graduate student or postdoctoral fellow candidate at the time of application:**
 - Cannot be supported by parent grant
 - If coming off of institutional training grant, need letter from institution
- **AFTER application submission:**
 - Can be supported by the parent grant at the recipient's own risk, pending funding decision of supplement application

Research Supplements to Promote Re-Entry into Biomedical and Behavioral Research Careers (PA-18-592, Re-Entry Supplements)



- Candidate must be US citizen, non-citizen nationals or permanent residents, but does not need to be from underrepresented populations
- Candidate must have been on hiatus from research for 1-8 years; must be postdoctoral fellow or faculty before hiatus
- <https://grants.nih.gov/grants/guide/pa-files/PA-18-592.html>
- <http://www.cancer.gov/about-nci/organization/crchd/diversity-training/cure/ReEntryGuidelines>

What Do We Look for in a Supplement Application?

Candidate	Mentoring and Career Development Plan	Research Plan
<ul style="list-style-type: none">• Motivation• Accomplishments• Career goals• Eligibility and diversity statement	<ul style="list-style-type: none">• Scientific proficiency and mentoring expertise of mentor(s)• Defined role(s) and commitment of mentor(s)• Training of career skills• Clear benchmarks• Candidate-specific plans	<ul style="list-style-type: none">• Relevancy to Parent Grant project• Scientific impact on Parent Grant project• Research design and feasibility• Alignment with candidate's career goals

Contact

Sara Hargrave, PhD
sara.hargrave@nih.gov

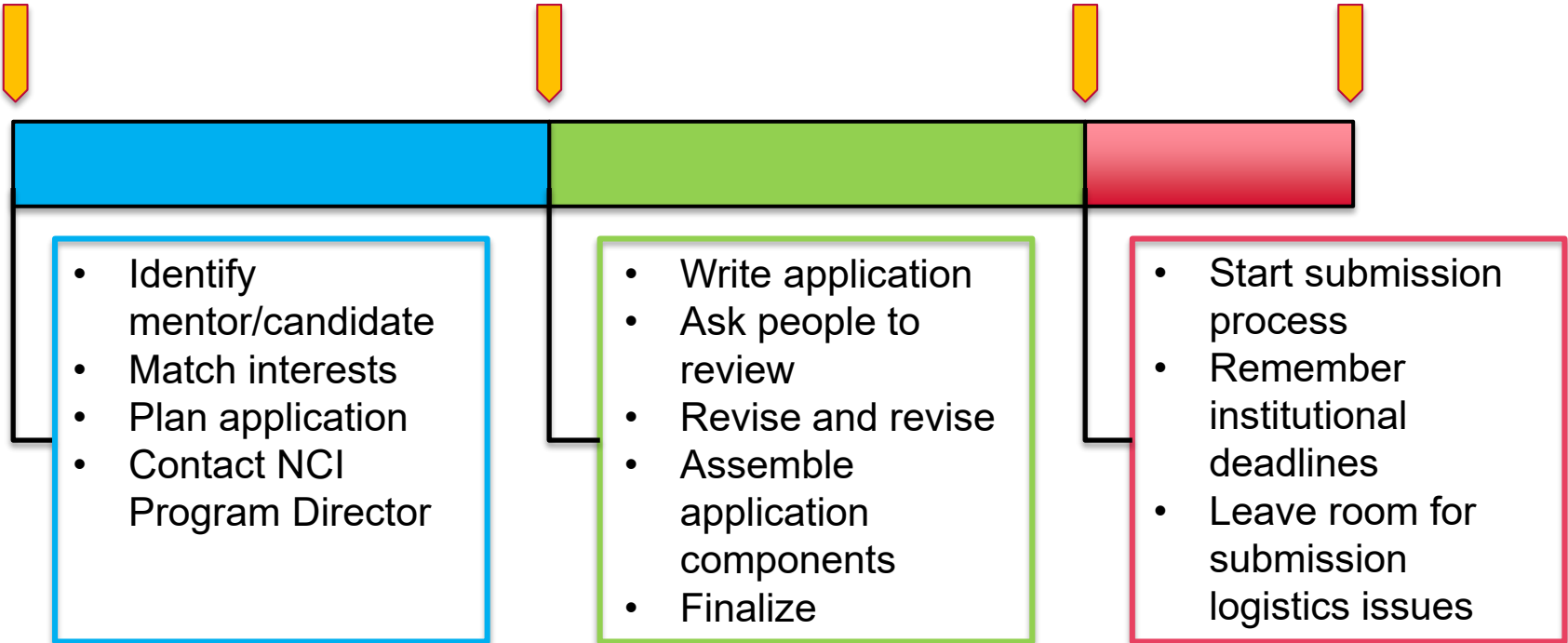
Suggested Time Line for Preparing a Supplement Application

5 Months
Prior

3 Months
Prior

1 Month
Prior

Submission
Deadline



Basic Cancer Health Disparities (CHD) Research Grants (R21 & R01)

Important collaboration between DCB and CRCHD

Science: Mechanistic studies that investigate biological/genetic basis of CHD

Eligibility: Open to any qualified researcher

Research project: Basic cancer disparities research, focus on racial/ethnic disparities

Due dates: June 19 and November 19, 2020

Contact

Tiffany Wallace, PhD

tiffany.wallace@nih.gov

Mechanism	Details
Exploratory/Developmental Grants Program for Basic Research in Cancer Health Disparities (R21) (https://grants.nih.gov/grants/guide/pa-files/par-18-655.html)	<ul style="list-style-type: none">• Pilot and feasibility studies• No preliminary data required but encouraged• Budget: Direct Cost for 2 years \leq \$275k; \leq \$200k per year.
Basic Research in Cancer Health Disparities (R01) (https://grants.nih.gov/grants/guide/pa-files/par-18-654.html)	<ul style="list-style-type: none">• Full project grant• Preliminary data required• Budget: No limit, but need to reflect the actual needs of the proposed project

Cancer Health Disparities Research Grant Examples

- Consequences and mechanism of aberrant splicing in African American prostate cancer disparities (R01)
- Biological implications of breast cancer protective variants in Latin American women with high Indigenous American ancestry (R01)
- Targeting CRLF2 and Ikaros Alterations to Reduce Health Disparities in Childhood Leukemia (R01)
- Diet modulation of bacterial sulfur & bile acid metabolism and colon cancer risk (R01)
- Modulation of host intrinsic immunity to reduce prostate cancer disparity (R01)
- Inter-relationship between microbiota diversity, obesity and race in endometrial cancer (R21)
- Stress Inflammation Mechanisms of Survivorship Disparities Experienced by Hispanic Women After Breast Cancer (R21)
- Racial Disparity of microRNA in Hepatitis C Virus Mediated Hepatocellular Carcinoma (R21)

NEW: NCI Administrative Supplements to Support Cancer Disparity Collaborative Research (Clinical Trial Optional): PA-18-842

- **Purpose:** accelerate and strengthen multi-disciplinary cancer disparities research in wide ranging areas (cancer biology, cancer prevention, population sciences, translational & clinical studies)
- **Requires:** collaboration between **NCI-funded non-disparity researchers** and **cancer disparities-focused researchers**
- **Parent grant:**
 - Must have at least **two years** of active funding remaining at the **time of anticipated award**
 - Can receive only one award but may apply multiple times
- **Duration:** up to two years
- **Budget:**
 - Up to \$150K in Direct Cost per year
 - Cannot support parent grant PD/PI salary
- **Due Dates:** February 10, 2020; September 10, 2020
- **Notice:** NOT-CA-20-006 (expansion of eligible parent grant mechanisms)

Contact

Liz Perruccio, PhD

liz.perruccio@nih.gov

Intramural Diversity-Focused Training Program: Intramural CURE (iCURE)



Website: <https://www.cancer.gov/about-nci/organization/crchd/diversity-training/icure>

Applications for 2021

Fall, 2020

Contact Jessica Calzola, PhD,
iCURE@nih.gov

Purpose:

- Support research experiences of underrepresented students and scientists in the **NCI Intramural Research Program** in Bethesda, Rockville and Frederick, Maryland
- Promote professional and career development
- Help the trainees reach research independence

**Post-baccalaureate
(Incl. Post-master's)**

**One-year research
experience awards**

Graduate Students

**Two-year research
experience awards**

Postdoctoral Fellows

**Three-year research
experience awards**

Contact

Alison Lin, PhD

linaj@mail.nih.gov

 @NCICRCHD

<https://www.cancer.gov/about-nci/organization/crchd>



**NATIONAL
CANCER
INSTITUTE**

www.cancer.gov

www.cancer.gov/espanol