

NCI-CONNECT

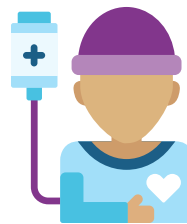
Comprehensive Oncology Network Evaluating Rare CNS Tumors

*You are not alone
in your journey
with a rare brain
or spine tumor.*

Your participation in the **NCI-CONNECT** program will help us better understand adult rare brain and spine tumors. Our goal is to improve care for you and future patients.

We invite you to participate in the NCI-CONNECT program:

- **Subscribe** to our newsletter to receive program news and information relevant to you.
> cancer.gov/nci/rare-brain-spine-tumor/blog
- **Complete** our online Risk and Outcomes Survey to help us learn why rare tumors develop and how this impacts you.
> cancer.gov/nci/rare-brain-spine-tumor/risk-study
- **Follow us** on Twitter for brain and spine tumor information.
> @NIHBrainTumor #NCICONNECT
- **Visit our NCI-CONNECT Clinic** to meet our expert healthcare team. You will get treatment advice and learn ways to improve your health and well-being.



NCI-CONNECT Clinic

The **NCI-CONNECT Clinic** brings together adult patients with the same rare brain or spine tumor and their caregivers to receive special services. First visit services include:

- **A review of your diagnosis.** Our team will evaluate your tumor tissue prior to your first visit to confirm your tumor type. We will also look for gene changes that could cause cancer and help us treat it.
- **Consultations with our expert healthcare team.** These include:
 - **Group meeting with a health and wellness expert.** You will learn coping and wellness techniques and meet others with your same diagnosis.
 - **Personalized meeting with a genetic counselor** to determine if you or your family are at risk for developing cancer.
 - **Meeting with our expert healthcare team** to answer questions about your diagnosis and discuss treatment and clinical trial options.



Questions?

Contact us at
NCICONNECT@mail.nih.gov
or call **(240) 760-6530**

NCI-CONNECT Tumor Types:

- > ATRT
- > Choroid Plexus Tumors
- > Diffuse Midline Gliomas
- > Ependymoma
- > Gliomatosis Cerebri
- > Gliosarcoma
- > Medulloblastoma
- > Meningioma (High Grade)
- > Oligodendroglioma
- > Pineal Region Tumors
- > PXA / APXA
- > PNET

Our healthcare team sees patients with all types of primary brain and spine tumors. Contact us even if your diagnosis is different than shown here.

cancer.gov/nci-connect